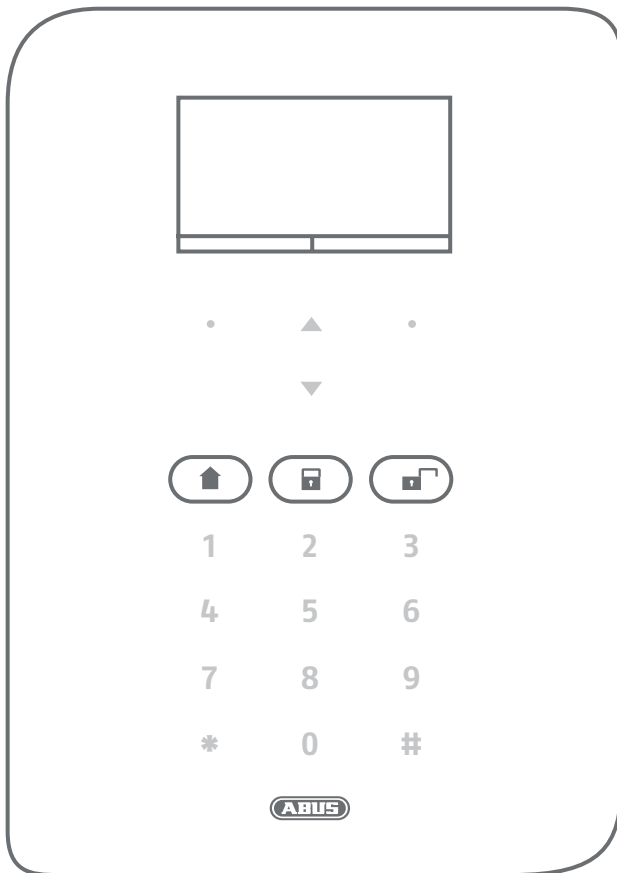




Security Tech Germany

Quick Guide

FUZU50500



BOM 12853778

Installationsanleitung / Installation manual / Instructions d'installation / Installatiehandleiding / Installationsvejledning / Istruzioni per l'installazione

1

Wichtig / Important / Important / Belangrijk / Vigtigt / Importante

DE Update auf neue Firmware-Version $\geq 2.01.08$

NL Update naar nieuwe firmwareversie $\geq 2.01.08$

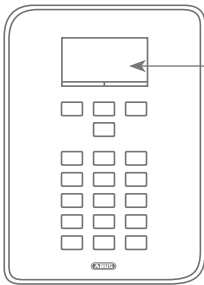
DK Updatér til ny firmware-version $\geq 2.01.08$

GB Update to new firmware version $\geq 2.01.08$

FR Mise à jour vers la nouvelle version firmware $\geq 2.01.08$

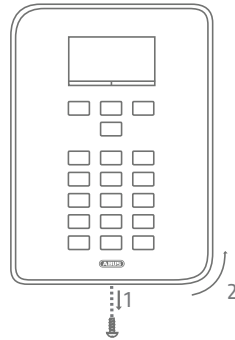
IT Aggiornamento alla versione del firmware $\geq 2.01.08$

2



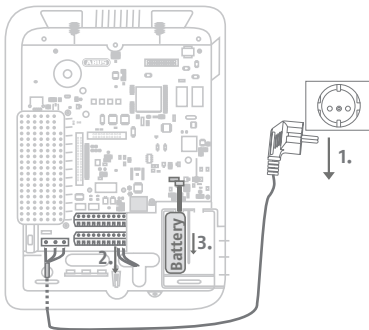
- DE** Errichtermodus
- GB** Installer Mode
- FR** Mode installateur
- NL** Installateurmodus
- DK** Programmeringsmenu
- IT** Modalità installatore

3



4

Achtung! / Attention! / Attention! / Let op! / Vigtigt! / Attenzione!



DE **Wichtig:** Trennen Sie die Zentrale vom Strom

NL **Belangrijk:** Koppel de centrale van het stroomnet.

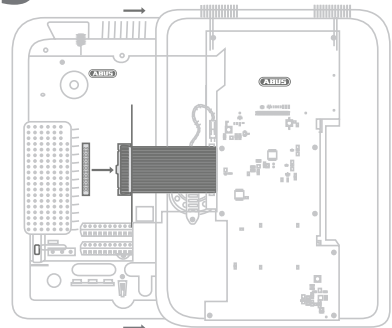
GB **Important:** Disconnect the alarm panel from the power supply.

DK **Vigtigt:** Gør centralen spændingsløs.

FR **Important:** Mettez la centrale d'alarme hors tension.

IT **Importante:** Scollegare la centrale dalla rete elettrica.

5



DE Secvest Tasten Front entfernen

GB Remove Secvest Key Panel

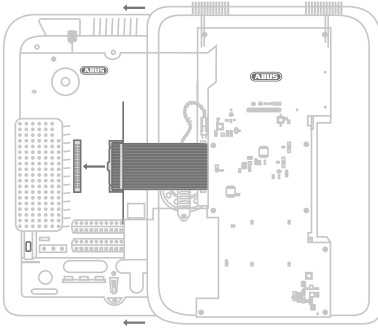
FR Retirer la surface touches de la Secvest

NL Secvest centrale met toetsen verwijderen

DK Fjern Secvest central meine tast

IT Rimuovere la cover Secvest con tasti

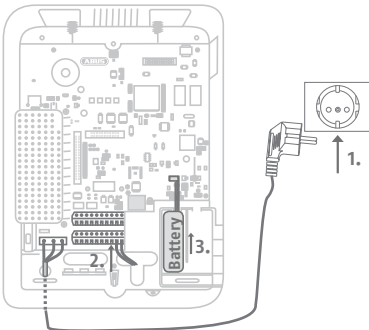
6



- (DE) Secvest Touch Front anschließen
- (GB) Connect Secvest Touch Panel lid
- (FR) Brancher le boîtier centrale de la Secvest Touch
- (NL) Secvest Touch centrale aansluiten
- (DK) Tilslut Secvest Touch central
- (IT) Applicare la Fronte custodiaTouch Secvest

7

Achtung! / Attention! / Attention ! / Let op! / Vigtigt! /
¡Atención! / Uwaga! / OBS! / Attenzione!



- (DE) Strom wieder anschließen
Reihenfolge:
230V- oder 12V-Anschluss anschließen (1. oder 2.)
Akku anschließen (3.)
- (GB) Reconnect to the power supply
Sequence:
Connect 230V or 12V connection (1. or 2.)
Connect battery (3.)
- (FR) Rebrancher l'alimentation
Séquence :
Brancher le raccord 230 V ou 12 V (1. ou 2.)
Brancher Batterie (3.)
- (NL) Stroom weer aansluiten
Volgorde:
230V- of 12V-aansluiting aansluiten (1. of 2.)
Batterij aansluiten (3.)
- (DK) Tilslut igen strømmen
Rækkefølge:
Tilslut 230V- eller 12V-tilslutning (1. eller 2.)
Tilslut Batteri (3.)
- (IT) Collegare nuovamente alla rete elettrica.
In sequenza:
Collegare ad una porta da 230V o 12V(1. o 2.)
collegare la Batteria (3.)

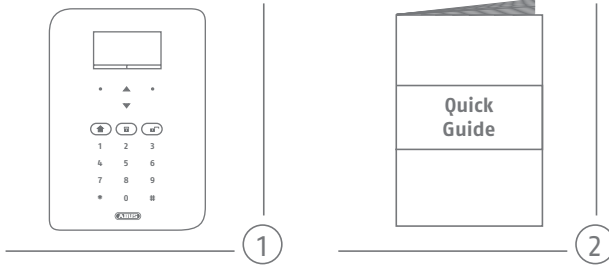
8





Security Tech Germany

Lieferumfang / Scope of delivery / Contenu de la livraison / Inhoud van de levering / Leveringsomfang / Leveransomfattning / Zakres dostawy / Fornitura / Volumen de entrega



- DE** Detaillierte Informationen finden Sie in der Errichteranleitung auf abus.com.
- FR** Pour des informations détaillées, veuillez consulter les instructions d'installation sur abus.com.
- NL** Gedetailleerde informatie vindt u in de installateurshandleiding op abus.com.
- IT** Informazioni dettagliate sono disponibili nelle istruzioni per gli installatori su abus.com.
- GB** You can find more detailed information on this in the instructions for installers on abus.com
- DK** Der findes detaljerede oplysninger i teknikervejledningen på abus.com.